

# LED Tape Mud-In

## Aluminum Channels and Accessories

### PRODUCT OVERVIEW

Recess illuminated sections of light for clean looking and creative design options. The aluminum, perforated frame enables easy mud-in installation. Includes snap-on frosted lens to produce even illumination and reduce pixelization. Available in 8' lengths with pre-made corner sections.

### FITS FOLLOWING

#### LEDTASK™ LTR SERIES TAPE

- LTR-E Economy Series
- LTR-P Professional Series (Dry)
- LTR-S COB (Chip On Board)
- LTR-S-DTW (Dim to Warm)
- LTR-S-TW (Twist Task)
- LTR-S-RGBW (Dry)

### SPECIFICATIONS

#### CONSTRUCTION

- Extruded aluminum channel

#### OPTICS

- Frosted lens (provided)

#### CONNECTORS

- Sure-Tite STW Series
- Sure-Tite ESTW Series

#### ACCESSORIES

- End caps

#### USAGE

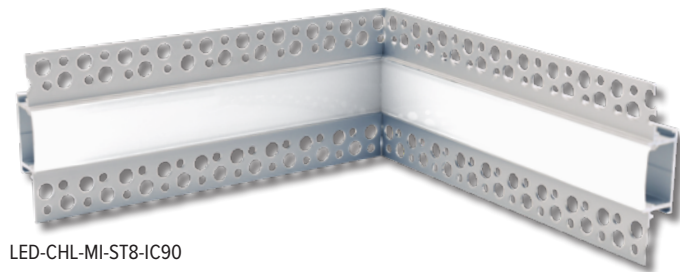
- Dry location only

#### WARRANTY

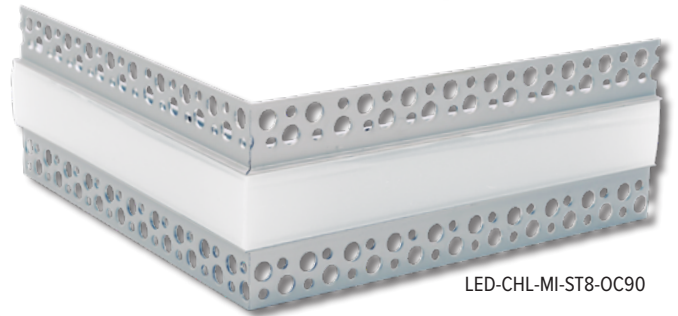
- 5 years

Project Name	Type
--------------	------

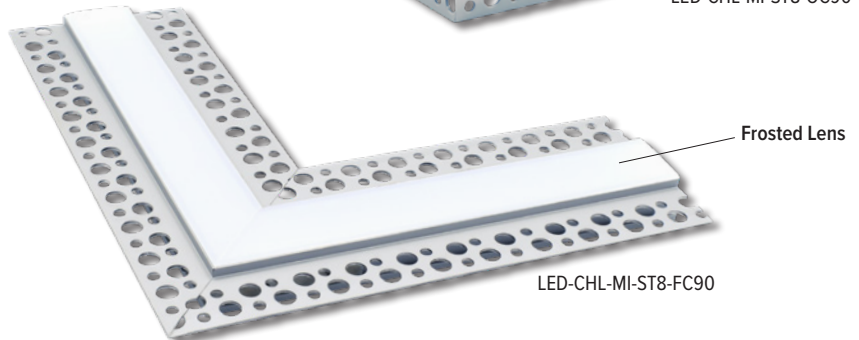
Catalog #	Date
-----------	------



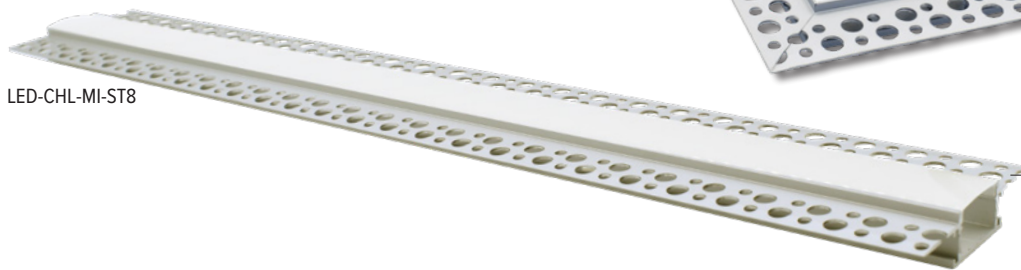
LED-CHL-MI-ST8-IC90



LED-CHL-MI-ST8-OC90



LED-CHL-MI-ST8-FC90



LED-CHL-MI-ST8

### ORDERING INFORMATION

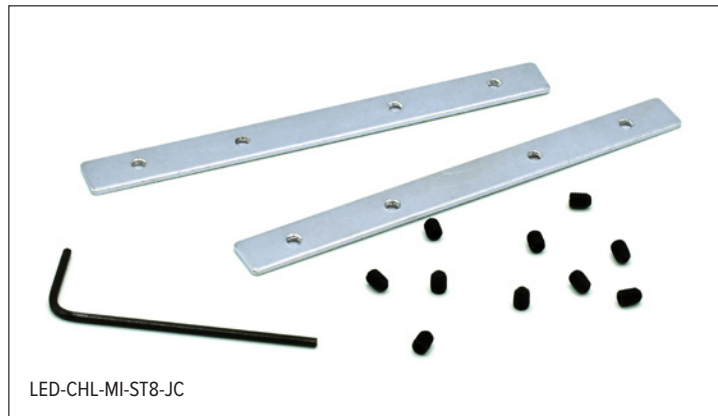
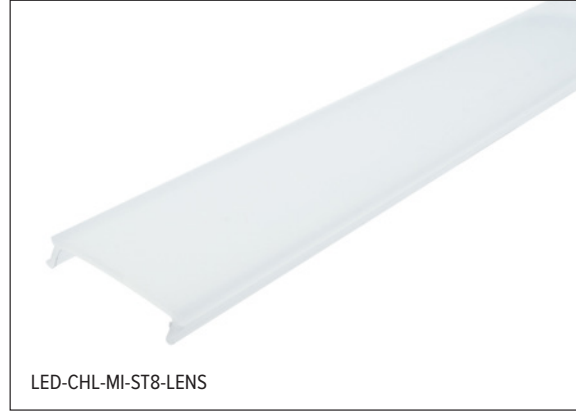
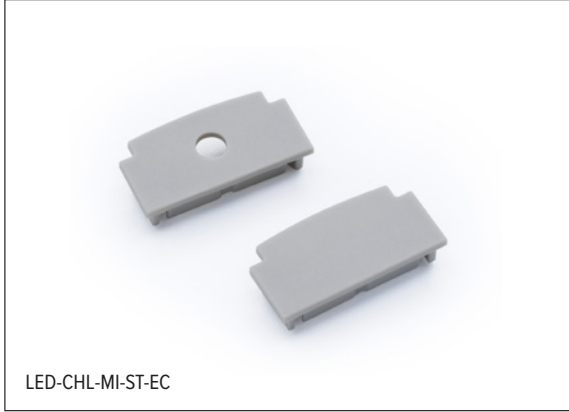
Example: LED-CHL-MI-ST8

Model	Type	Format	Length	Shape
LED-CHL	MI	ST (Straight)	8 (8')	
LED-CHL	MI	ST8		FC90 (90° Flat Corner)*
LED-CHL	MI	ST8		IC90 (90° Inside Corner)*
LED-CHL	MI	ST8		OC90 (90° Outside Corner)*

\* All corner sections include 4 joiners, set screws, hex key

# LED Tape Mud-In

## Aluminum Channels and Accessories



Product Video



Instruction Sheet



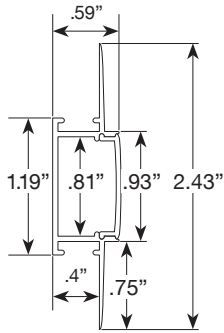
### ACCESSORIES

Catalog No.	Description
LED-CHL-MI-ST-EC	(2) End Caps for LED-CHL-MI-ST8 one with hole, one solid
LED-CHL-MI-ST8-JC	Straight 2-piece joiner coupler, set screws, hex keys
LED-CHL-MI-ST8-LENS	PC diffuser lens, 8ft

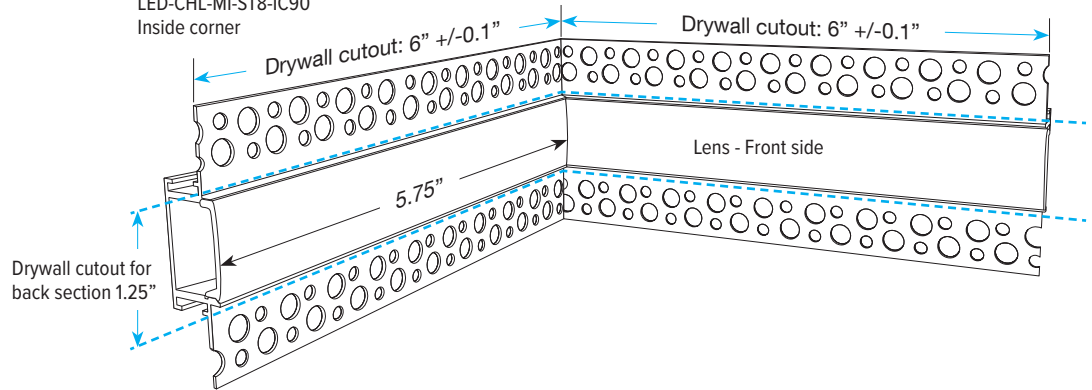
# LED Tape Mud-In

## Aluminum Channels and Accessories

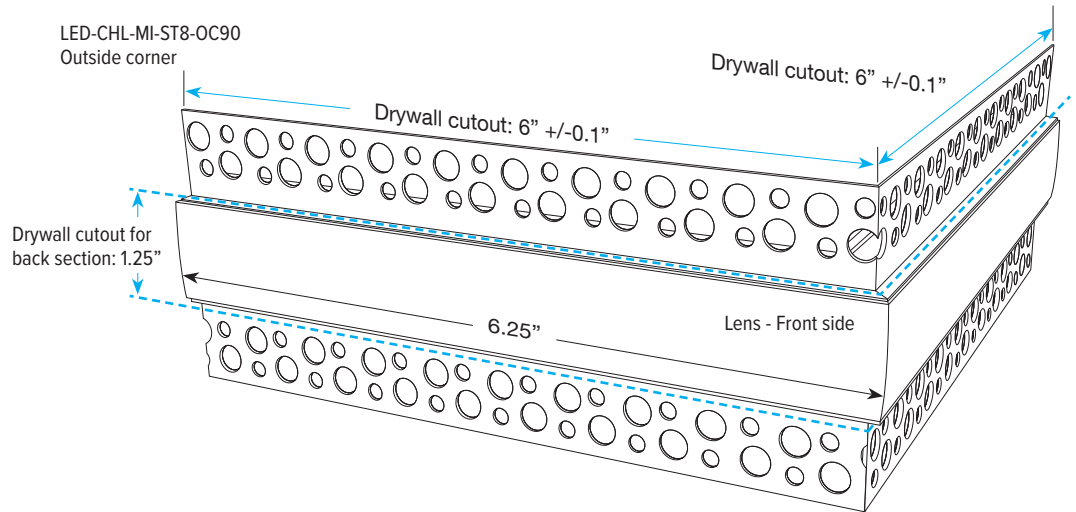
### DIMENSIONS



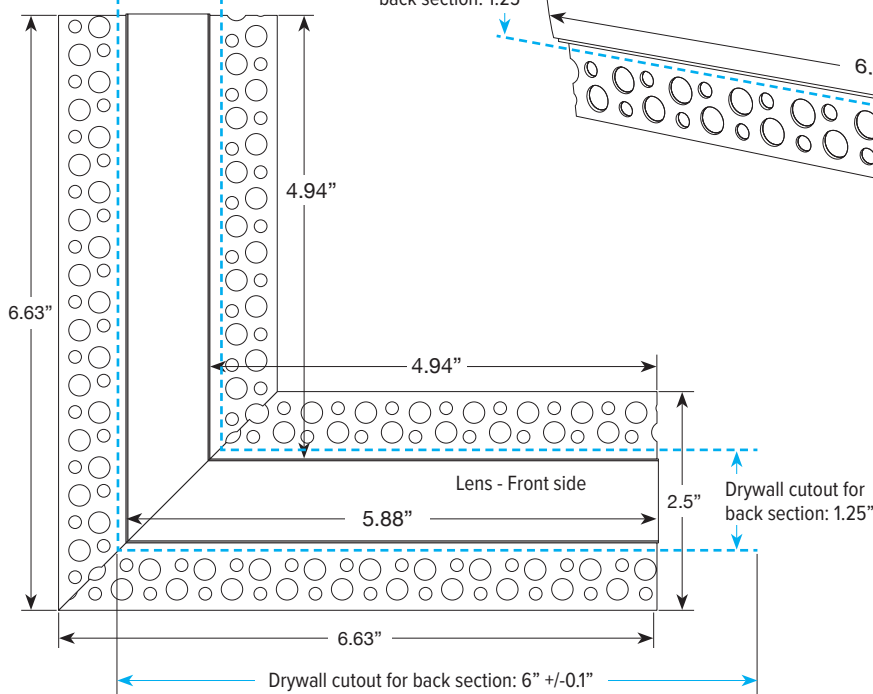
LED-CHL-MI-ST8-IC90  
Inside corner



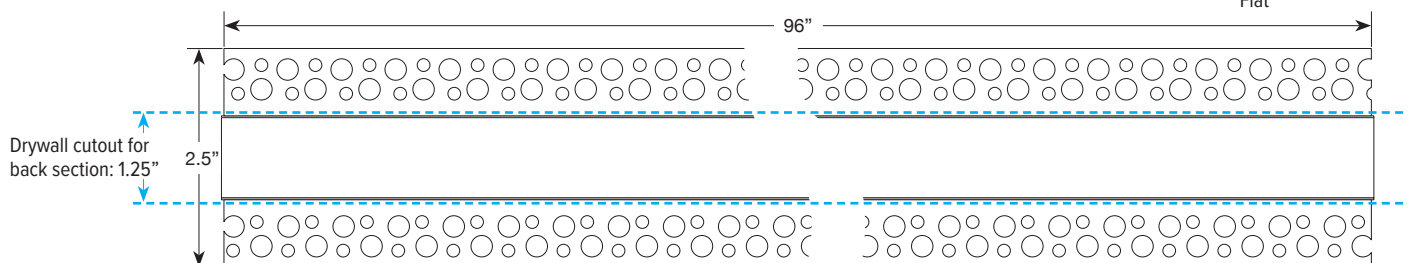
LED-CHL-MI-ST8-OC90  
Outside corner



LED-CHL-MI-ST8-FC90  
Flat corner



LED-CHL-MI-ST8  
Flat



# LED Tape Mud-In

## Aluminum Channels and Accessories

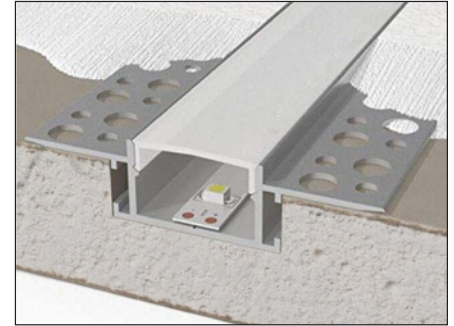
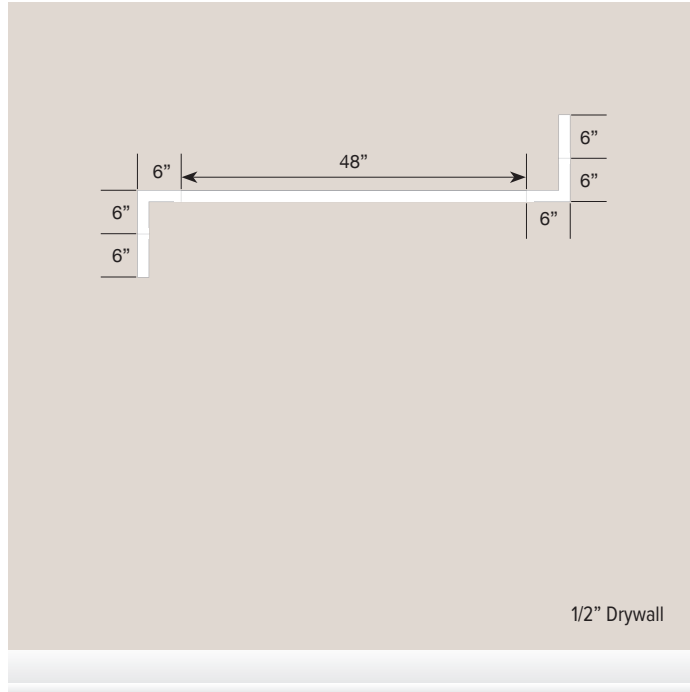


### BASIC LAYOUTS

#### FLAT CORNER EXAMPLE

Estimated parts:

- (2) LED-CHL-MI-ST8-FC90
- (1) LED-CHL-MI-ST8 (60"=5ft)
- (1) LED-CHL-MI-ST-EC



Mud-In Drywall Detail

#### OUTSIDE & INSIDE CORNER EXAMPLE

Estimated parts:

- (1) LED-CHL-MI-ST8-IC90
- (1) LED-CHL-MI-ST8-OC90
- (2) LED-CHL-MI-ST8 (180"=15ft)
- (1) LED-CHL-MI-ST-EC
- (1) LED-CHL-MI-ST8-JC

